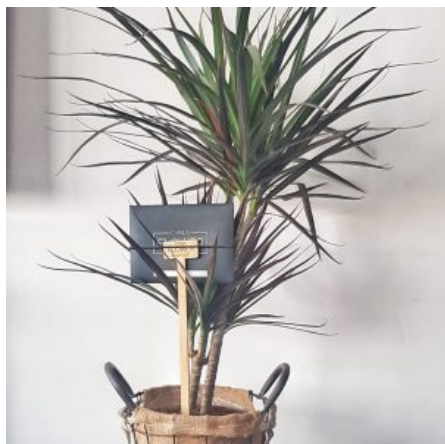


OFFICE PLANTS



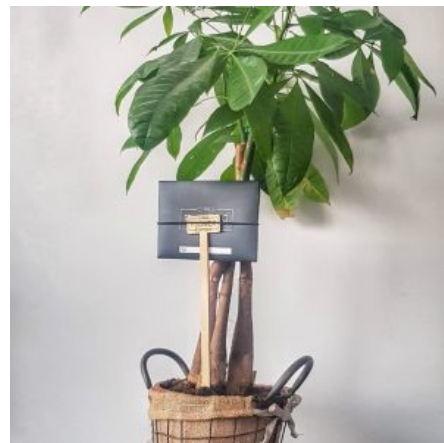
DRACAENA PLANT

Dracaena is a tall, full houseplant or tree with one or more trunks from which fantastic leaves in green, yellow and gold emerge that can have touches of pink or red around the edges. . The somewhat palm-like shape means that this houseplant adds a rugged, tropical feel and lends an exotic touch to any interior and it mixes well with other indoor trees with smaller leaves.

The name Dracaena is derived from the Greek 'drákaina', which means female dragon. This refers to the resin of the draco variety, which is bright red and from the names such as dragon tree and dragon's blood plant come. The resin is used in the paint industry.

PACHIRA PLANT

According to Chinese feng shui tradition, the leaves, with a bit of imagination look like green hands that capture happiness and good fortune, and the twisted stems store the treasure. In Asia, the plant is also called the money tree. There, it is a traditional housewarming gift that brings good fortune and happiness to the home.





LUCKY BAMBOO IN A VASE

Lucky bamboo arrangement in a tall vase. This arrangement consists of two spiral 8" sticks and four 12" straight sticks.

PHALAENOPSIS YELLOW - DOUBLE STEM ORCHID

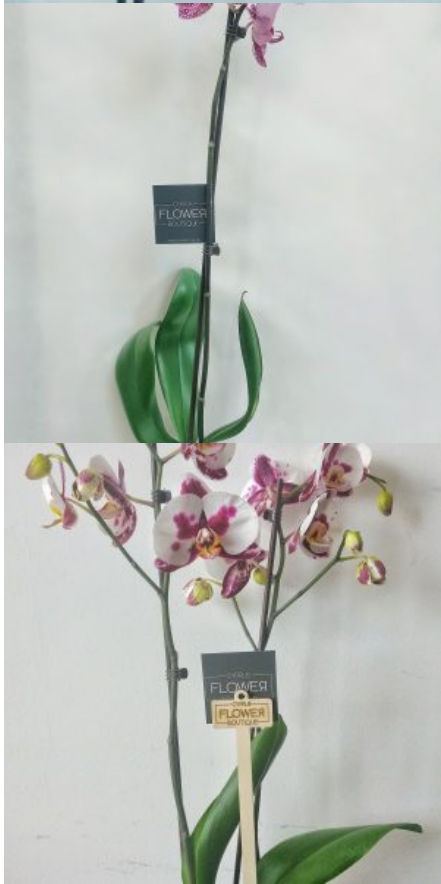
Orchids in the genus Phalaenopsis are monopodial epiphytic, sometimes lithophytic herbs with long, coarse roots and short leafy stems hidden by overlapping leaf bases. The leaves are usually arranged in two rows, relatively large and leathery, oblong to elliptic and sometimes succulent





PHALAENOPSIS BICOLOR - DOUBLE STEM ORCHID

Orchids in the genus Phalaenopsis are monopodial epiphytic, sometimes lithophytic herbs with long, coarse roots and short leafy stems hidden by overlapping leaf bases. The leaves are usually arranged in two rows, relatively large and leathery, oblong to elliptic and sometimes succulent



PHALAENOPSIS MAUVE - DOUBLE STEM ORCHID

Orchids in the genus Phalaenopsis are monopodial epiphytic, sometimes lithophytic herbs with long, coarse roots and short leafy stems hidden by overlapping leaf bases. The leaves are usually arranged in two rows, relatively large and leathery, oblong to elliptic and sometimes succulent





PHALAENOPSIS WHITE - DOUBLE STEM ORCHID

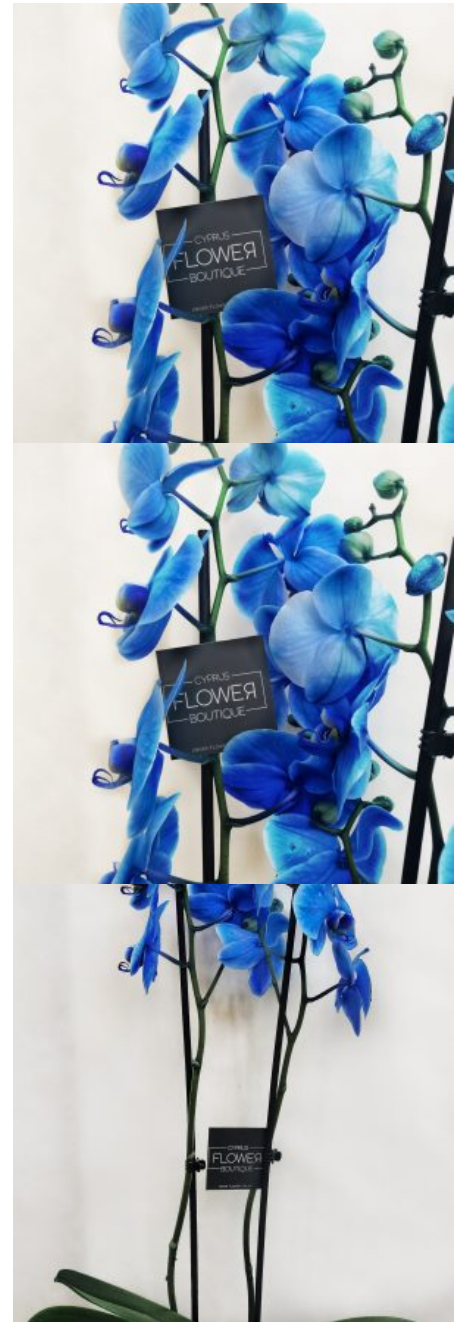
Orchids in the genus Phalaenopsis are monopodial epiphytic, sometimes lithophytic herbs with long, coarse roots and short leafy stems hidden by overlapping leaf bases. The leaves are usually arranged in two rows, relatively large and leathery, oblong to elliptic and sometimes succulent

Variations

Image	Height
	65cm
	100cm

PHALAENOPSIS BLUE - DOUBLE STEM ORCHID

Orchids in the genus Phalaenopsis are monopodial epiphytic, sometimes lithophytic herbs with long, coarse roots and short leafy stems hidden by overlapping leaf bases. The leaves are usually arranged in two rows, relatively large and leathery, oblong to elliptic and sometimes succulent



ORCHIDS

PHALAENOPSIS YELLOW - DOUBLE STEM ORCHID

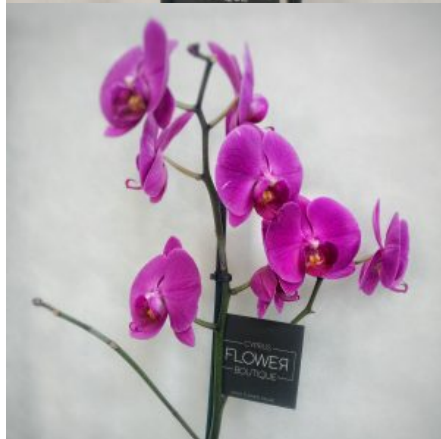
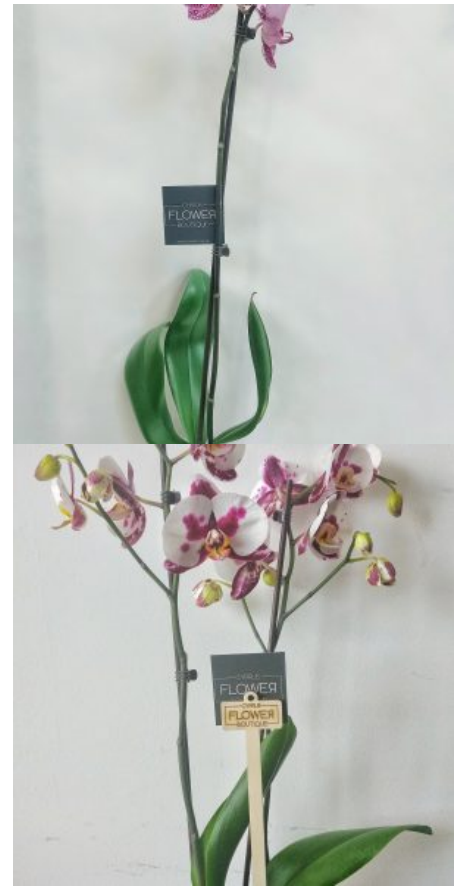
Orchids in the genus Phalaenopsis are monopodial epiphytic, sometimes lithophytic herbs with long, coarse roots and short leafy stems hidden by overlapping leaf bases. The leaves are usually arranged in two rows, relatively large and leathery, oblong to elliptic and sometimes succulent



PHALAENOPSIS BICOLOR - DOUBLE STEM ORCHID

Orchids in the genus Phalaenopsis are monopodial epiphytic, sometimes lithophytic herbs with long, coarse roots and short leafy stems hidden by overlapping leaf bases. The leaves are usually arranged in two rows, relatively large and leathery, oblong to elliptic and sometimes succulent





PHALAENOPSIS MAUVE - DOUBLE STEM ORCHID

Orchids in the genus *Phalaenopsis* are monopodial epiphytic, sometimes lithophytic herbs with long, coarse roots and short leafy stems hidden by overlapping leaf bases. The leaves are usually arranged in two rows, relatively large and leathery, oblong to elliptic and sometimes succulent



PHALAENOPSIS WHITE - DOUBLE STEM ORCHID

Orchids in the genus Phalaenopsis are monopodial epiphytic, sometimes lithophytic herbs with long, coarse roots and short leafy stems hidden by overlapping leaf bases. The leaves are usually arranged in two rows, relatively large and leathery, oblong to elliptic and sometimes succulent

Variations

Image	Height
	65cm
	100cm



PHALAENOPSIS BLUE - DOUBLE STEM ORCHID

Orchids in the genus Phalaenopsis are monopodial epiphytic, sometimes lithophytic herbs with long, coarse roots and short leafy stems hidden by overlapping leaf bases. The leaves are usually arranged in two rows, relatively large and leathery, oblong to elliptic and sometimes succulent

